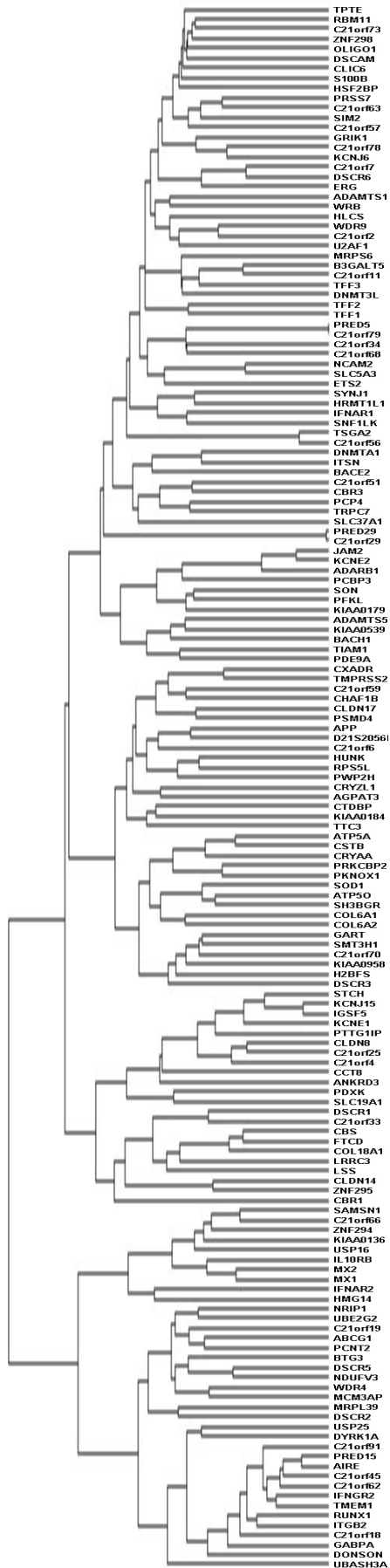


Genes dendrogram



Libraries dendrogram



colon (7 day juvenile) (4795 ESTs)
embryo (13.5-14.5dpc total fetus) (41143 ESTs)
fetus, whole fetus (12.5dpc total fetus) (11458 ESTs)
total fetus (19.5 dpc total fetus) (26097 ESTs)
tongue (adult) (12123 ESTs)
diaphragm, diaphragm (adult) (5719 ESTs)
kidney (6 weeks) (2942 ESTs)
embryo (four-cell-embryo) (3059 ESTs)
kidney, kidney (juvenile (7 days old)) (2957 ESTs)
pancreas (embryonic day 9.5) (4484 ESTs)
hippocampus (27-32 days) (15386 ESTs)
muscle myotube (16494 ESTs)
hypothalamus, brain (1175 ESTs)
mandible (3020 ESTs)
kidney, kidney (newborn (day 0)) (1997 ESTs)
ectoplacental cone, embryo (embryonic day 7.5 postconception) (3188 ESTs)
head (15 days embryo) (16171 ESTs)
cerebellum (16 days neonate) (8679 ESTs)
retina, eye (21442 ESTs)
medulla oblongata (10 days neonate) (4241 ESTs)
epididymis (adult) (706 ESTs)
lung (adult) (2969 ESTs)
stomach (adult) (10524 ESTs)
cecum (adult) (6766 ESTs)
lung (0 day neonate) (10005 ESTs)
head (17-day embryo) (1057 ESTs)
spleen (4 weeks) (32461 ESTs)
vagina (adult) (8069 ESTs)
oviduct (2 days pregnant adult) (6150 ESTs)
kidney, kidney (4 weeks) (2986 ESTs)
head (12 days embryo) (2849 ESTs)
medulla oblongata (adult) (13863 ESTs)
pineal gland (27-32 days) (2896 ESTs)
retina (6 weeks) (1163 ESTs)
testis, testis (10-12 week old) (6054 ESTs)
hypothalamus (adult) (16846 ESTs)
trophoblast, placenta (3216 ESTs)
heart (13 days embryo) (8765 ESTs)
inner ear (adult) (2729 ESTs)
retina (adult) (8251 ESTs)
cortex (10 days neonate) (16613 ESTs)
cerebellum (7 days neonate) (10390 ESTs)
cerebellum (10 days neonate) (20184 ESTs)
bladder (1517 ESTs)
B cells (0 cells embryo) (6677 ESTs)
head (10 days neonate) (1307 ESTs)
diencephalon (16 days neonate) (2106 ESTs)
embryo (6-day embryo) (2536 ESTs)
spinal cord (11 days embryo) (1068 ESTs)
pineal gland pineal gland (27-32 days) (1153 ESTs)
thymus (adult) (12392 ESTs)
bone (adult) (9138 ESTs)
urogenital ridge (embryonic), gonad (fetal, mixture of 11.5 and 12.5 dpc) (2086 ESTs)
skin (10 days neonate) (17034 ESTs)
whole skin, skin (11 weeks old) (21107 ESTs)
pancreas (adult) (17967 ESTs)
islets of langerhans, pancreas (adult) (3449 ESTs)
kidney (0 day neonate) (1037 ESTs)
embryo (9 days embryo) (14729 ESTs)
lung (13 days embryo) (8630 ESTs)
thymus (0 day neonate) (17362 ESTs)
ovary (2 days pregnant adult) (8898 ESTs)
spinal cord (adult) (15938 ESTs)
testis (13 days embryo) (12770 ESTs)
mammary gland (10 days lactation, adult) (9921 ESTs)
kidney (postnatal day 1) (2545 ESTs)
parthenogenote (9.5 days embryo) (7950 ESTs)
es cells (19284 ESTs)
maxillary process (2263 ESTs)
stomach (13 days embryo) (7991 ESTs)
thymus (3 days neonate) (18965 ESTs)
head (12-day embryo) (5441 ESTs)
embryo (eight-cell stage embryo) (3443 ESTs)
thymus (3 weeks) (1155 ESTs)
adrenal gland (adult) (4156 ESTs)
craniofacial tissues (embryonic day 8.5) (1460 ESTs)
embryo, embryo (2-cell) (14813 ESTs)
egg (2 cells) (11077 ESTs)
embryo (10 day embryo) (13955 ESTs)
vesicular gland (adult) (2029 ESTs)
embryonic body between diaphragm region and neck (12 days embryo) (22079 ESTs)
corpora quadrigemina (adult) (26289 ESTs)
testis (15 days embryo) (9130 ESTs)
flow-sorted, common myeloid progenitors, blood (1001 ESTs)
urinary bladder (adult) (80427 ESTs)
thymus (4 weeks) (47699 ESTs)
head (13-day embryo) (8064 ESTs)
testis (adult) (61415 ESTs)
olfactory brain (adult) (14496 ESTs)
embryo (sixteen-cell-embryo) (3195 ESTs)
forelimb (13 days embryo) (4659 ESTs)
retina (1 day) (1137 ESTs)
bone marrow (3107 ESTs)
B cells (2772 ESTs)
Tcell, blood (m30 cd4+ cells) (9458 ESTs)
lung, lung (6-8 month old) (4406 ESTs)
ovary and uterus (11 days pregnant, adult) (6534 ESTs)
decidual tissue (day 6.5-8.5 of gestation) (1340 ESTs)
macrophage, blood (wehi-3 cell line) (5523 ESTs)
embryo, whole embryo (10.5dpc embryo) (1239 ESTs)
primary sorted bone marrow cells (adult) (1133 ESTs)
embryo (2-cell stage embryo) (3689 ESTs)
blastocyst, embryo (embryo (pre-implantation)) (15454 ESTs)
brain (1123 ESTs)
liver (13-day embryo) (6179 ESTs)
colon (6 weeks) (10495 ESTs)
bowel (6 weeks) (2895 ESTs)
small intestine (adult) (10188 ESTs)
placenta, placenta (adult) (5706 ESTs)
colon (18967 ESTs)
liver (28458 ESTs)
whole body (12 days embryo) (3462 ESTs)
embryo, whole embryo (13dpc embryo) (3497 ESTs)
head (11 days embryo) (3037 ESTs)
gall bladder (adult) (1417 ESTs)
embryo (fertilized one-cell-embryo) (3321 ESTs)
pancreatic bud, pancreas (embryonic day 10.5 and 12.5, mixed) (4787 ESTs)
trophoblast stem cell (3.5-dpc) (8437 ESTs)
undifferentiated es cell (3602 ESTs)
salivary gland (19333 ESTs)
kidney (26183 ESTs)
head (0 day neonate) (13911 ESTs)
ovary (newborn ovary) (7773 ESTs)
osteoblast (3740 ESTs)
pancreas (e14.5) (2411 ESTs)
hippocampus (adult) (15019 ESTs)
total pancreas, pancreas (embryonic day 16.5) (9765 ESTs)
total pancreas, pancreas (adult) (1628 ESTs)
newborn heart, heart (newborn) (3913 ESTs)
eyeball (0 day neonate) (13641 ESTs)
amygdala (27-32 days) (1032 ESTs)
embryo (10 days embryo) (1996 ESTs)
pancreas (p.c. 14.5) (7646 ESTs)
brain (10 weeks) (1563 ESTs)
head (17 days embryo) (1674 ESTs)
whole brain, brain (embryo 18.5 dpc) (11532 ESTs)
whole brain, brain (embryo 15.5 dpc) (2523 ESTs)
pituitary gland, brain (embryo, 14 dpc) (1372 ESTs)
lung (8847 ESTs)
mesenchymal stem cell (2935 ESTs)
nullipotent stem cell (2990 ESTs)
spleen (6 days neonate) (11974 ESTs)
eyeball (12 days embryo) (9534 ESTs)
retina (22223 ESTs)
embryo, whole embryo (6.5dpc embryos) (1887 ESTs)
brain (adult) (7338 ESTs)
embryo (0 and 12 pc embryo) (4763 ESTs)
whole embryo (embryonic 9-day) (2093 ESTs)
male genital ridge/mesonephros (12.5-dpc) (3456 ESTs)
in vitro fertilized eggs (egg) (16871 ESTs)
brain (8122 ESTs)
embryo, whole embryo (15.5dpc embryos) (1566 ESTs)
mammary gland (18380 ESTs)
liver (14 days embryo) (1548 ESTs)
es cell (16) (1423 ESTs)
embryo (7.5dpc embryo) (9903 ESTs)
neural retina (embryonic day 14.5 post-fertilization) (15736 ESTs)
embryo, late gastrula (embryo, 7.5 dpc) (1048 ESTs)
mullerian duct includes surrounding region (12 days embryo) (9163 ESTs)
newborn brain, brain (newborn) (4221 ESTs)
kidney (adult) (37018 ESTs)
embryo (6 days embryo) (18944 ESTs)
embryo (7 days embryo) (10649 ESTs)
cerebellum (0 day neonate) (19352 ESTs)
aorta and vein (adult) (16116 ESTs)
head (16 days embryo) (22745 ESTs)
heart (16 days neonate) (8163 ESTs)
diencephalon (adult) (34821 ESTs)
thymus (16 days neonate) (18947 ESTs)
es cell (3648 ESTs)
cerebellum (adult) (9433 ESTs)
placenta (adult) (5477 ESTs)
pituitary gland (adult) (8944 ESTs)
spinal ganglion (32 days embryo) (17367 ESTs)
lung (16 days embryo) (3676 ESTs)
liver (adult) (23495 ESTs)
liver (10 weeks) (1460 ESTs)
skin (0 day neonate) (8277 ESTs)
colon (adult) (7442 ESTs)
spinal cord (12 days embryo) (9573 ESTs)
embryo (11 day embryo) (10584 ESTs)
thymus (2 days neonate) (4431 ESTs)
ovary (12 days embryo) (1062 ESTs)
embryo (10-11 day embryo) (16293 ESTs)
embryo (18-day embryo) (17739 ESTs)
embryo (embryo, 14 dpc) (9428 ESTs)
newborn kidney, kidney (newborn) (2850 ESTs)
subfornical organ and postrema, brain (adult) (4982 ESTs)
wolffian duct includes surrounding region (12 days embryo) (9340 ESTs)
melanocyte (10751 ESTs)